

## DOMOTIC TOUCH

The Domotic Touch is a simple solution with installation parameters of a simple switch.

### Economic functionality

Increases energy efficiency by programming the number of hours of operation (1, 2 or 3 hours).

### Comfort functionality

Allows rationalization of energy expenses by the temperature control functionality (18°C, 20°C, 22°C, 24°C).

Thanks to its room temperature sensor this function allows you to select the desired temperature for your comfort.

### Flexibility

The Domotic Touch allows one or more electric radiators / towel warmers to be controlled on the same room, until a maximum power of 2000W.



ON / OFF

Press 2 seconds

The panel switches on when the icon ON/OFF is pressed for 2 seconds.



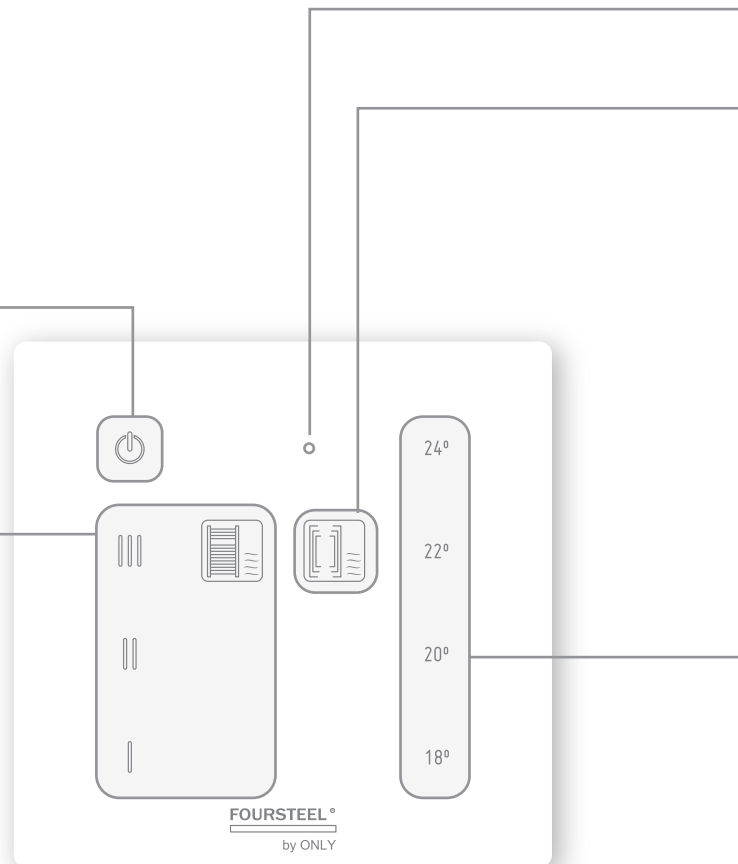
WARMING AND DRYING TOWELS

Press 2 seconds - continuous operation for 1, 2 or 3 hours.

In this function, the towel warmer switches on and works until reaching the operation time of 1, 2 or 3 hours, according to the programs I, II or III.

During the selection process, the radiator icon blinks while the programmed functions are being detected.

In the program I the radiator works for 1 hour and switches off automatically by the end of that period of time. This procedure is the same for the program II (2 hours) and III (3 hours).



## OPERATION MODE

Whenever there is touch contact with the panel when the device is not working, the LED ON/OFF turns on.

Whenever there is touch contact with the panel when the device is working, the LED light of the operating program stays lit up.

For security reasons, to select a different operation mode, the corresponding icon must be pressed for 2 seconds to activate the operation.

Operation can be stopped at any moment by pressing the LED ON/OFF for 2 seconds.

### DUTY-CYCLE ON MODE INDICATOR



MODE DUTY-CYCLE

Press +5 seconds - Activating the mode Duty-cycle Function to use for a more customized control equipment temperature.

The activation of this mode is shown by the light indicator above the icon.

Operation timed at 25%,50%, 75% and 100% per 20 minute period.

18° = 25% (5 minutes ON / 15 minutes OFF, ...)

20° = 50% (10 minutes ON / 10 minutes OFF, ...)

22° = 75% (15 minutes ON / 5 minutes OFF, ...)

24° = 100% (continuous operation)

### ROOM TEMPERATURE CONTROL

Press 2 seconds - Activating the temperature control

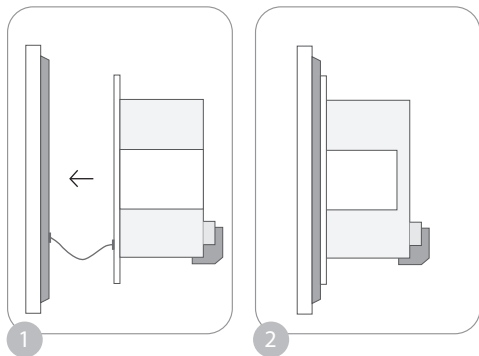
During the selection process, the ambient icon and the temperatures' values blink while the programmed functions are being detected.

The sensor reads the room temperature according to the selected LED, between 18°C and 24°C.

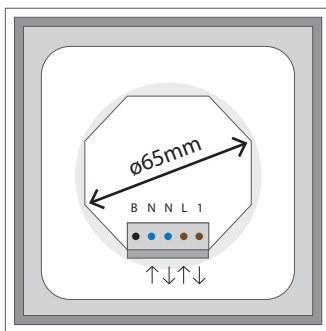
### IMPORTANT:

The installation must be carried out by a specialized technician

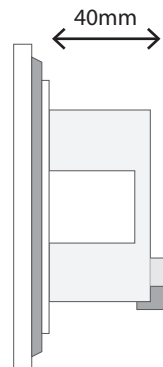
## 1 ASSEMBLY SCHEME



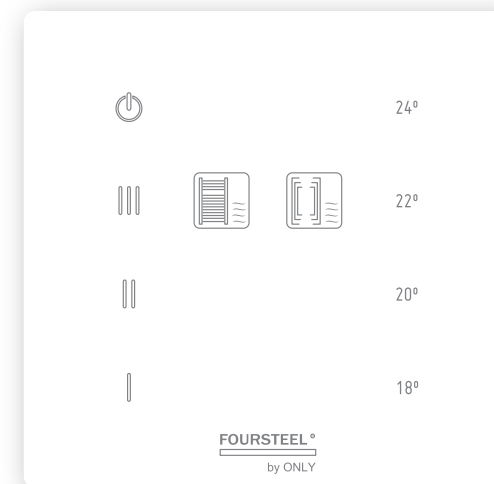
## 2 MEASURE FOR HOLEMAKING



bottom view



side view



# DOMOTIC TOUCH

INSTRUCTION MANUAL

### REPAIR OF DAMAGES

In case of an emergency or damage, switch off the device and contact your reseller. Do not attempt to repair the unit yourself, otherwise this will be considered as a breach of the warranty provisions.

### GUARANTEE

The warranty for this product is 2 years on presentation of the corresponding receipt.

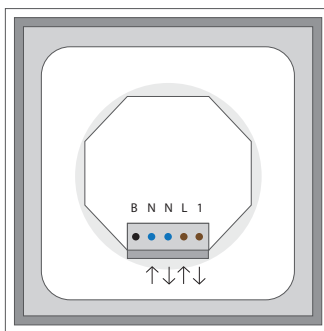
### MAINTENANCE

When cleaning the radiator use a soft damp cloth only. Never use soap-based detergents, abrasive cleaners or detergents containing ammonia and other acids for cleaning and maintenance.

### DISPOSAL OF THE EQUIPMENT

This product must be disposed of pursuant to the valid legal provisions and separated from domestic waste. Please dispose of this product by bringing it to your local collection point or recycling centre of such equipment. Recycling contributes to reducing CO<sup>2</sup> emissions and thus to the protection of the environment.

## 3 ELECTRICAL ASSEMBLY



- B -
- N NEUTRAL INPUT
- N NEUTRAL OUTPUT TOWEL WARMER
- L PHASE INPUT
- 1 PHASE OUTPUT TOWEL WARMER

### TECHNICAL CHARACTERISTICS-

voltage - AC 230V, 50Hz  
power output - 2000W  
class of protection - class I  
standard protection - IP 54

**FOURSTEEL®**  
[heating products factory]

